

**City of Sutter Creek**

**Initial Study**

**For: Sutter Hill East Storm Drain and Sewer Line Project**

**Prepared by:  
City of Sutter Creek  
18 Main Street  
Sutter Creek, CA 95685**

**January 15, 2008**

**1. Purpose of Initial Study**

Sections 21157.1 and 21157.5 of the Public Resources Code allows for limited environmental review of subsequent projects covered by an EIR provided that certain findings are made. The City of Sutter Creek’s General Plan EIR allows such limited review for projects that are consistent with and are within the scope of the EIR. Because the environmental study for the parcel map is tiered from the General Plan EIR, the environmental review of this initial study will therefore analyze whether there are any new or additional environmental impacts above and beyond those already identified.

**2. Project Information**

- a. Project title: Sutter Hill East Storm Drain and Sewer Line Project
- b. Lead agency name and address: City of Sutter Creek,, Sutter Creek, California 95685
- c. Contact person and phone number: Darcy Goulart (877) 691-2025
- d. Project sponsor’s name and address: City of Sutter Creek,, Sutter Creek, California 95685

**3. Project Description**

Description of project: The project involves the installation of underground storm drain and sewer lines through approximately 5 properties located in Amador County boundaries. The total site disturbance will be no more than 39,500 sq feet in area. The new infrastructure will connect into the City of Sutter Creek sewer and storm drain system. Properties in the immediate vicinity with failing septic systems will benefit from the improvements and ties into the system. Exhibits have been included in the Initial Study.

The project is located east of Sutter Hill Road and south of Eureka Road, Old Ridge Road and Ridge Road, southeast Sutter Creek, County of Amador (APN 44-020-025, 027, 028, 030, & 031)

**4. Environmental Factors Potentially Affected:**

The following factors are based on Appendix G of the CEQA Guidelines and adapted to reflect the eighteen environmental subject areas analyzed within the Negative Declaration.

	Aesthetics		Agriculture Resources	X	Air Quality
	Biological Resources		Cultural Resources		Geology /Soils
	Hazards & Hazardous Materials		Hydrology / Water Quality		Land Use / Planning
	Mineral Resources		Noise		Population / Housing
	Public Services		Recreation		Transportation/Traffic
	Utilities / Service Systems		Mandatory Findings of Significance		

DETERMINATION:

On the basis of this initial evaluation:

X	I find that the proposed project COULD NOT have a significant effect on the environment, and a NEGATIVE DECLARATION will be prepared.
	I find that although the proposed project could have a significant effect on the environment, there will not be a significant effect in this case because revisions in the project have been made by or agreed to by the project proponent. A MITIGATED NEGATIVE DECLARATION will be prepared.
	I find that the proposed project MAY have a significant effect on the environment, and an ENVIRONMENTAL IMPACT REPORT is required.
	I find that the proposed project MAY have a “potentially significant impact” or “potentially significant unless mitigated” impact on the environment, but at least one effect 1) has been adequately analyzed in an earlier document pursuant to applicable legal standards, and 2) has been addressed by mitigation measures based on the earlier analysis as described on attached sheets. An ENVIRONMENTAL IMPACT REPORT is required, but it must analyze only the effects that remain to be addressed.
	I find that although the proposed project could have a significant effect on the environment, because all potentially significant effects (a) have been analyzed adequately in an earlier EIR or NEGATIVE DECLARATION pursuant to applicable standards, and (b) have been avoided or mitigated pursuant to that earlier EIR or NEGATIVE DECLARATION, including revisions or mitigation measures that are imposed upon the proposed project, nothing further is required.

\_\_\_\_\_  
Signature

\_\_\_\_\_  
Date

**A. Aesthetics –**

	Potentially Significant Impact	Less Than Significant Impact with Mitigation Incorporated	Less Than Significant Impact	No Impact
I. AESTHETICS -- Would the project:				
a) Have a substantial adverse effect on a scenic vista?				X
b) Substantially damage scenic resources, including, but not limited to, trees, rock outcroppings, and historic buildings within a state scenic highway?				X
c) Substantially degrade the existing visual character or quality of the site and its surroundings?				X
d) Create a new source of substantial light or glare which would adversely affect day or nighttime views in the area?				X

**Discussion**

- a) - d) No Impact – The project includes the installation of underground storm drain and sewer lines. The project would not have a substantial adverse effect on a scenic vista nor would it damage scenic resources, including trees, rocks outcropping or historic buildings. The project would not involve any above ground construction that would degrade the existing visual character or quality of the site and its surroundings. The project does not involve any above ground lighting sources that would permanent. It is possible that lighting will be on the site during construction phases of the project.

**B. Agricultural Resources –**

	Potentially Significant Impact	Less than Significant Impact with Mitigation Incorporated	Less Than Significant Impact	No Impact
<p>II. AGRICULTURE RESOURCES: In determining whether impacts to agricultural resources are significant environmental effects, lead agencies may refer to the California Agricultural Land Evaluation and Site Assessment Model (1997) prepared by the California Dept. of Conservation as an optional model to use in assessing impacts on agriculture and farmland. Would the project:</p>				
a) Convert Prime Farmland, Unique Farmland, or Farmland of Statewide Importance (Farmland), as shown on the maps prepared pursuant to the Farmland Mapping and Monitoring Program of the California Resources Agency, to non-agricultural use?				X
b) Conflict with existing zoning for agricultural use, or a Williamson Act contract?				X
c) Involve other changes in the existing environment which, due to their location or nature, could result in conversion of Farmland, to non-agricultural use?				X

**Discussion:**

- a) – c) - No Impact - The project site is located on marginal soils and has been historically used for grazing land and not for agricultural purposes. The project site is not rated as Prime Farmland, Farmland of Statewide Importance, Unique Farmland, or Farmland of Local Importance. The site is not under a Williamson Act Contract.

**C. Air Quality -**

	Potentially Significant Impact	Less than Significant Impact with Mitigation Incorporated	Less Than Significant Impact	No Impact
III. AIR QUALITY -- Where available, the significance criteria established by the applicable air quality management or air pollution control district may be relied upon to make the following determinations. Would the project:				
a) Conflict with or obstruct implementation of the applicable air quality plan?		X		
b) Violate any air quality standard or contribute substantially to an existing or projected air quality violation?			X	
c) Result in a cumulatively considerable net increase of any criteria pollutant for which the project region is non-attainment under an applicable federal or state ambient air quality standard (including releasing emissions which exceed quantitative thresholds for ozone precursors)?			X	
d) Expose sensitive receptors to substantial pollutant concentrations?			X	
e) Create objectionable odors affecting a substantial number of people?			X	

**Discussion:**

a) Less than Significant Impact with Mitigation Incorporated - An overall warming trend has been recorded since the late 19<sup>th</sup> century, with the most rapid warming occurring over the past two decades. The 10 warmest years of the last century all occurred within the last 15 years. It appears that the decade of the 1990's was the warmest in human history. It is believed that this warming trend is related to the release of certain gases into the atmosphere which have been primarily attributed to human activities. The greenhouse gasses (GHG) include carbon dioxide (CO<sub>2</sub>), methane (CH<sub>4</sub>), nitrous oxide (N<sub>2</sub>O), and hydrofluorocarbons. Greenhouse gases absorb infrared energy that would otherwise escape from the earth, and as the infrared energy is absorbed, the air surrounding the earth is heated. There are uncertainties as to exactly what the climate changes will be in various local areas of the earth, and what the effects of clouds will have in determining the rate at which the mean temperature will increase. There are also uncertainties associated with the magnitude and timing of other consequences of a warmer planet: sea level rise, spread of certain diseases out of their usual geographic range, the effect on agricultural production, water supply, sustainability of ecosystems, increased strength and frequency of storms, extreme heat events, air pollution episodes, and the consequence of

these effects on the economy. (ARB 2005, 2006)

The State of California has been studying the impact of climate change since 1988, when AB4420 was approved. This legislation directed the California Energy Commission, in consultation with the Air Resources Board and other agencies, to study the implication of global warming on California's environment, economy, and water supply. The Energy Commission was also directed to prepare and maintain the state's inventory of GHG emissions. That bill directed the ARB to adopt regulations to achieve the maximum feasible and cost-effective reduction of greenhouse gas emission from motor vehicles. ARB staff's proposal implementing these regulations was approved by the Air Resources Board in September, 2004. With implementation, the average reduction of greenhouse gases from new California cars and light trucks will be about 22 percent in 2012 and about 30 percent in 2016, compared to today's vehicles (ARB 2005, 2006).

Most recently, California adopted AB32, the Global Warming Solutions Act of 2006. AB32 codifies the state's goal by requiring that the state's global warming emissions be reduced to 1990 levels by 2020. This reduction will be accomplished through an enforceable statewide cap on global warming emissions that will be phased in starting in 2012. In order to effectively implement the cap, AB32 directs ARB to develop appropriate regulations and establish a mandatory reporting system to track and monitor global warming emission levels.

In January of 2008, AB32 went into effect. There are currently no thresholds or recommended methodologies for determining the significance of a project's potential cumulative contribution to Global Climate Change (GCC) in CEQA documents. However, an individual project may not generate enough GHG emissions to significantly influence GCC. Therefore, with regard to the Sutter Hill East Storm Drain and Sewer Line Project, GCC were looked upon as being a cumulative impact to the environment rather than a significant project specific impact.

Potential ways the Project would contribute to the generation of GHG emissions include vehicle emissions or short term construction of the project. However at this time there is no empirical evidence available at present to legitimately evaluate this issue in a CEQA document. Methodologies and baselines are currently being developed by the ARB and should be available within the next few months. To address the issue, the Amador Air District currently adheres to the rules and regulations as specified by the ARB. Best Management Practices will help mitigate potential emissions due to short term operation of the project. One Best Management Practice that has been included as a GHG reducing mitigation measure is the exclusive use of ARB-Certified Diesel Construction Equipment. Construction vehicles used on this Project will be subject to this requirement.

#### Mitigation Measures:

1-A: All construction vehicles used for this Project shall be Air Resources Board Certified Construction Equipment. (MM C-1)

(<http://www.capcoa.org/ceqa/CAPCOA%20White%20Paper%20-%20CEQA%20and%20Climate%20Change.pdf>)

2-A: Where applicable, demolished construction materials shall be recycled or reused during the construction phase of this Project. (MM C-4)

(<http://www.capcoa.org/ceqa/CAPCOA%20White%20Paper%20-%20CEQA%20and%20Climate%20Change.pdf>)

b) – e) Less than Significant Impact - Short-term air pollution in the form of particulate matter (fugitive dust) may be caused by construction activity including truck and equipment movement, grading, and earthwork. Adherence to Amador County APCD rules and regulations will control these effects. All air contaminants generated by activities within the project area are required to comply with the rules and regulations of the Amador Air District. Objectionable odors are not anticipated in association with this Project. Should such odors become a problem, they would be managed as required by the Environmental Health Department.

**D. Biological Resources -**

	Potentially Significant Impact	Less than Significant Impact with Mitigation Incorporated	Less Than Significant Impact	No Impact
IV. BIOLOGICAL RESOURCES -- Would the project:				
a) Have a substantial adverse effect, either directly or through habitat modifications, on any species identified as a candidate, sensitive, or special status species in local or regional plans, policies, or regulations, or by the California Department of Fish and Game or U.S. Fish and Wildlife Service?			X	
b) Have a substantial adverse effect on any riparian habitat or other sensitive natural community identified in local or regional plans, policies, regulations or by the California Department of Fish and Game or US Fish and Wildlife Service?			X	
c) Have a substantial adverse effect on federally protected wetlands as defined by Section 404 of the Clean Water Act (including, but not limited to, marsh, vernal pool, coastal, etc.) through direct removal, filling, hydrological interruption, or other means?			X	
d) Interfere substantially with the movement of any native resident or migratory fish or wildlife species or with established native resident or migratory wildlife corridors, or impede the use of native wildlife nursery sites?			X	
e) Conflict with any local policies or ordinances protecting biological resources, such as a tree preservation policy or ordinance?			X	

f) Conflict with the provisions of an adopted Habitat Conservation Plan, Natural Community Conservation Plan, or other approved local, regional, or state habitat conservation plan?			X	
--	--	--	---	--

Discussion:

- a) – f)– Less than Significant Impact –There are no known candidate, sensitive, or special status species of plants or animals or trees within the project area, nor are there any known wetlands. The project would not conflict with the provisions of an adopted Habitat Conservation Plan, Natural Community Conservation Plan, or other approved local, regional, or state habitat conservation plan since these plans do not exist.

**E. Cultural Resources -**

	Potentially Significant Impact	Less than Significant Impact with Mitigation Incorporated	Less Than Significant Impact	No Impact
V. CULTURAL RESOURCES -- Would the project:				
a) Cause a substantial adverse change in the significance of a historical resource as defined in §15064.5?			X	
b) Cause a substantial adverse change in the significance of an archaeological resource pursuant to §15064.5?			X	
c) Directly or indirectly destroy a unique paleontological resource or site or unique geologic feature?			X	
d) Disturb any human remains, including those interred outside of formal cemeteries?			X	

Discussion:

- a) – d) Less than Significant Impact – The General Plan states that Sutter Creek is generally a moderately sensitive cultural resource zone. However historical growth and development within the City has virtually destroyed any prehistoric sites that may have existed. No new or additional significant environmental effects were identified in the project specific analysis and no impacts are expected. California state law requires that if cultural resources are encountered work shall stop immediately and a professional archaeologist and/or the County coroner (if human remains are encountered) shall be contacted to coordinate an investigation of the discovery. If any remains are determined to be Native American guidelines of the Native American Heritage Commission shall be adhered to in the treatment and disposition of the remains.

**F. Geology and Soils –**

	<b>Potentially Significant Impact</b>	<b>Less than Significant Impact with Mitigation Incorporated</b>	<b>Less Than Significant Impact</b>	<b>No Impact</b>
VI. GEOLOGY AND SOILS—Would the Project:				
a) Expose people or structures to potential substantial adverse effects, including the risk of loss, injury, or death involving:			X	
i) Rupture of a known earthquake fault, as delineated on the most recent Alquist-Priolo Earthquake Fault Zoning Map issued by the State Geologist for the evidence of a known fault? Refer to Division of Mines and Geology Special Publication 42.			X	
ii) Strong Seismic ground shaking?			X	
iii) Seismic-related ground failure, including liquefaction?			X	
iv) Landslides?			X	
b) Result in substantial soil erosion or the loss of topsoil?			X	
c) Be located on a geologic unit or soil that is unstable, or that would become unstable as a result of the project, and potentially result in on - or off-site landslide, lateral spreading, subsidence, liquefaction or collapse?			X	
d) Be located on expansive soil, as defined in Table 18-1-B of the Uniform Building Code (1994), creating substantial risks to life or property?			X	
e) Have soils incapable of adequately supporting the use of septic tanks or alternative waste water disposal systems where sewers are not available for the disposal of waste water?			X	

Discussion:

a) (i-iv) – Less than Significant Impact - The General Plan lists several local faults of significant extent that have been identified in the planning area. However there are no State identified seismic hazard zones in or near the planning area. The maximum credible earthquake projected for the area is 6 to 6.5 on the Richter scale. Although an earthquake of that magnitude causes moderate to major damage, there are no epicenters greater than 3.0 Richter Magnitude within 24 a mile radius. The City addresses potential earthquake hazards through its Building Department who is responsible for enforcement of earthquake resistant construction standards as specified in the Uniform Building Code (UBC). Landslides are unlikely to occur on the project site. Landslides are most likely on slopes greater than 30% but may occur on relatively flat terrain when triggered by an earthquake. The soil characteristics and provisions in the UBC minimize concerns for landslide in the City.

b) – e) Less than Significant Impact - Some soil erosion is expected during construction, but loss of topsoil is not a significant issue. Existing Codes that regulate erosion control will be implemented during wet winter months. The project site is relatively flat and soil erosion from water runoff is very remote. The General Plan states that most areas of the City contain relatively stable soils. If there are site specific concerns further investigations are required during the construction process. The project consists of construction of storm drain and sewer lines to accommodate future growth and failing septic systems in the immediate area. The project will only improve the existing infrastructure concerns/issues of the area.

**G. Hazards and Hazardous Materials –**

	Potentially Significant Impact	Less than Significant Impact with Mitigation Incorporated	Less Than Significant Impact	No Impact
VII. HAZARDS AND HAZARDOUS MATERIALS – Would the project:				
a) Create a significant hazard to the public or the environment through the routine transport, use, or disposal of hazardous materials?			X	
b) Create a significant hazard to the public or the environment through reasonably foreseeable upset and accident conditions involving the release of hazardous materials into the environment?			X	
c) Emit hazardous emissions or handle hazardous or acutely hazardous materials, substances, or waste within one-quarter mile of an existing or proposed school?			X	
d) Be located on a site which is included on a list of hazardous materials sites compiled pursuant to			X	

Government Code Section 65962.5 and, as a result, would it create a significant hazard to the public or the environment?				
e) For a project located within an airport land use plan or, where such a plan has not been adopted, within two miles of a public airport or public use airport, would the project result in a safety hazard for people residing or working in the project area?			X	
f) For a project within the vicinity of a private airstrip, would the project result in a safety hazard for people residing or working in the project area?			X	
g) Impair implementation of or physically interfere with an adopted emergency response plan or emergency evacuation plan?			X	
h) Expose people or structures to a significant risk of loss, injury or death involving wildland fires, including where wildlands are adjacent to urbanized areas or where residences are intermixed with wildlands?			X	

Discussion:

a) – h) – Less than Significant Impact - The project includes the disturbance of 39,500 sq. ft. of area for the construction of underground storm drain and sewer lines and would not involve the transport, use or disposal of hazardous materials or substances. The proposed project would not result in a significant risk of explosion or accidental release of hazardous substances and is therefore considered a less than significant impact. The project does not involve hazardous emissions or hazardous material and is not located within one-quarter mile of an existing or proposed school. The site is not located on a list of hazardous materials sites and people would not be exposed to potential health hazards. The project is located within two miles of a public use airport. The site is not located within the direct flight path of arriving and departing flight. Compliance with FAA regulations and standards in regards to structures located within 20,000 feet of a public use airport will reduce this impact to less than significant. The project would not impair implementation of an emergency response plan or evacuation plan. There aren't any wildlands located adjacent to the project site.

**H. Hydrology and Water Quality –**

	Potentially Significant Impact	Less than Significant Impact with Mitigation Incorporated	Less Than Significant Impact	No Impact
VIII. HYDROLOGY AND WATER QUALITY -- Would the project:				
a) Violate any water quality standards or waste discharge requirements?			X	
b) Substantially deplete groundwater supplies or interfere substantially with groundwater recharge such that there would be a net deficit in aquifer volume or a lowering of the local groundwater table level (e.g., the production rate of pre-existing nearby wells would drop to a level which would not support existing land uses or planned uses for which permits have been granted)?			X	
c) Substantially alter the existing drainage pattern of the site or area, including through the alteration of the course of a stream or river, in a manner which would result in substantial erosion or siltation on- or off-site?			X	
d) Substantially alter the existing drainage pattern of the site or area, including through the alteration of the course of a stream or river, or substantially increase the rate or amount of surface runoff in a manner which would result in flooding on- or off-site?			X	
e) Create or contribute runoff water which would exceed the capacity of existing or planned stormwater drainage systems or provide substantial additional sources of polluted runoff?			X	
f) Otherwise substantially degrade water quality?			X	
g) Place housing within a 100-year flood hazard area as mapped on a federal Flood Hazard Boundary or Flood Insurance Rate Map or other flood hazard delineation map?			X	
h) Place within a 100-year flood hazard area structures which would impede or redirect flood flows?			X	
i) Expose people or structures to a significant risk of loss, injury or death involving flooding, including flooding as a result of the failure of a levee or dam?			X	

j) Inundation by seiche, tsunami, or mudflow?			X	
---	--	--	---	--

**Discussion:**

a) – i) – Less than Significant Impact - The construction of new storm drain and sewer lines would not generate additional flow that could impact water quality or discharge pollutants into the water system. These improvements are meant to deal with future growth and failing septic systems in the area. The City facilities can handle the anticipated capacity of existing and proposed growth. The project does not require the use of water nor will it interfere with groundwater recharge resulting in a net deficit in aquifer volumes. The project would not alter the course of any stream or river and minimal erosion or siltation on or off-site is expected with the construction. The overall drainage pattern of the site would slightly be modified during construction of the proposed infrastructure.. Additional sources of polluted runoff would not be generated by project. The project does not involve placement of housing with the 100-year flood hazard and is not located on a parcel within the 100-year flood hazard. There are no large bodies of water within the area that would pose a seiche or tsunami hazard or physical/geological features resulting in a mudflow hazard.

**I. Land Use and Planning -**

	Potentially Significant Impact	Less than Significant Impact with Mitigation Incorporated	Less Than Significant Impact	No Impact
IX. LAND USE AND PLANNING - Would the project:				
a) Physically divide an established community?				X
b) Conflict with any applicable land use plan, policy, or regulation of an agency with jurisdiction over the project (including, but not limited to the general plan, specific plan, local coastal program, or zoning ordinance) adopted for the purpose of avoiding or mitigating an environmental effect?				X
c) Conflict with any applicable habitat conservation plan or natural community conservation plan?				X

**Discussion:**

a) – c) – No Impact -

The construction of underground storm drain and sewer lines would not physically divide an established community within the City of Sutter Creek. The project map does not conflict with any local plans such as the General Plan or Municipal Code. The project

would not conflict with any habitat conservation plan or natural community conservation plan.

**J. Mineral Resources –**

X. MINERAL RESOURCES – Would the project:	Potentially Significant Impact	Less than Significant Impact with Mitigation Incorporated	Less Than Significant Impact	No Impact
a) Result in the loss of availability of a known mineral resource that would be of value to the region and the residents of the state?				X
b) Result in the loss of availability of a locally-important mineral resource recovery site delineated on a local general plan, specific plan or other land use plan?				X

Discussion:

a) – b) – No Impact - Sutter Creek has several mineral classifications throughout the City. The General Plan states that a Site Plan Permit is required for lands that may be adjacent to areas designated mining. The site is not adjacent to any mineral resources site, therefore additional studies are not needed at this time.

**K. Noise –**

	Potentially Significant Impact	Less than Significant Impact with Mitigation Incorporated	Less Than Significant Impact	No Impact
XI. NOISE – Would the project result in:				
a) Exposure of persons to or generation of noise levels in excess of standards established in the local general plan or noise ordinance, or applicable standards of other agencies?			X	
b) Exposure of persons to or generation of excessive groundborne vibration or groundborne noise levels?			X	
c) A substantial permanent increase in ambient noise levels in the project vicinity above levels existing without the project?			X	
d) A substantial temporary or periodic increase in ambient noise levels in the project vicinity above levels existing without the project?			X	
e) For a project located within an airport land use plan or, where such a plan has not been adopted, within two miles of a public airport or public use			X	

airport, would the project expose people residing or working in the area to excessive noise levels?				
f) For a project within the vicinity of a private airstrip, would the project expose people residing or working in the project area to excessive noise levels?			X	

**Discussion:**

a) – f) – **Less than Significant Impact** - The construction of new infrastructure would not generate noise of any type that would increase the noise levels above the established standards for the City. There is potential for vibration and increased noise levels in the area during construction. Noise generated by construction equipment, including earthmovers, material handlers and electrical generators can reach high levels (79 to 90 decibels, A-scale measured at 50 feet). However, this is not expected to be significant and will be minimal and short term in nature. The site is located near Westover Field, a public use airport. The project site falls within the Overflight Zone (Zone 3) of Westover Field, which is located southeast of the Highway 49-Highway 104 intersection at Sutter Hill. Fixed wing aircraft and helicopters utilize Westover Field. The prevailing approach and take-off patterns for both airplanes and helicopters (which are different), would not directly affect the project site.

**L. Population and Housing –**

	<b>Potentially Significant Impact</b>	<b>Less than Significant Impact with Mitigation Incorporated</b>	<b>Less Than Significant Impact</b>	<b>No Impact</b>
XII. POPULATION AND HOUSING -- Would the project:				
a) Induce substantial population growth in an area, either directly (for example, by proposing new homes and businesses) or indirectly (for example, through extension of roads or other infrastructure)?				X
b) Displace substantial numbers of existing housing, necessitating the construction of replacement housing elsewhere?				X
c) Displace substantial numbers of people, necessitating the construction of replacement housing elsewhere?				X

**Discussion:**

a) – c) – **No Impact** - The proposed project involves the construction of underground storm drain and sewer infrastructure and would not induce population growth in the City either directly with new homes or businesses or indirectly through the extension of roads or infrastructure that hasn't already been addressed in the General Plan. Displacement of existing housing or persons would

not occur with the project. The proposed project site is located within the City’s Sphere of Influence (SOI) and population projections for the city have taken into account future growth and annexation of lands within the SOI. The current population of Sutter Creek is 2700 people.

**M. Public Services –**

	Potentially Significant Impact	Less than Significant Impact with Mitigation Incorporated	Less Than Significant Impact	No Impact
XIII. PUBLIC SERVICES				
a) Would the project result in substantial adverse physical impacts associated with the provision of new or physically altered governmental facilities, need for new or physically altered governmental facilities, the construction of which could cause significant environmental impacts, in order to maintain acceptable service ratios, response times or other performance objectives for any of the public services:				
a). Fire protection?				X
b). Police protection?				X
c). Schools?				X
d). Parks?				X
e). Other public facilities?				X

**Discussion:**

a) – No Impact - Fire Protection. The project site is currently within the Amador Fire Protection District (AFPD), which has primary responsibility for fire prevention, inspection and protection. The project would not have any effect on response times.

b) – No Impact - Police Protection. Police protection is the responsibility of the Sheriff’s Department since the properties are located in unincorporated Amador County. The project would not reduce response times or increase demand for patrol in the area.

c) – e). – No Impact – The project would not generate a need for additional school facilities or impact the existing capacity. The project would also not impact the existing

parks located within the City, nor would it require the construction of new facilities.

**N. Recreation –**

	Potentially Significant Impact	Less than Significant Impact with Mitigation Incorporated	Less Than Significant Impact	No Impact
XIV. RECREATION --				
a) Would the project increase the use of existing neighborhood and regional parks or other recreational facilities such that substantial physical deterioration of the facility would occur or be accelerated?				X
b) Does the project include recreational facilities or require the construction or expansion of recreational facilities which might have an adverse physical effect on the environment?				X

Discussion:

a) – b) – No Impact - The project would not increase the use of existing neighborhood or regional parks to the point that would cause physical deterioration of these facilities or the construction of new facilities. The project does not include recreational facilities or require the expansion of new facilities.

**O. Transportation/Traffic -**

	Potentially Significant Impact	Less than Significant Impact with Mitigation Incorporated	Less Than Significant Impact	No Impact
XV. TRANSPORTATION/TRAFFIC -- Would the project:				
a) Cause an increase in traffic which is substantial in relation to the existing traffic load and capacity of the street system (i.e., result in a substantial increase in either the number of vehicle trips, the volume to capacity ratio on roads, or congestion at intersections)?				X
b) Exceed, either individually or cumulatively, a level of service standard established by the county congestion management agency for designated roads or highways?				X
c) Result in a change in air traffic patterns, including either an increase in traffic levels or a change in location that results in substantial				X

safety risks?				
d) Substantially increase hazards due to a design feature (e.g., sharp curves or dangerous intersections) or incompatible uses (e.g., farm equipment)?				X
e) Result in inadequate emergency access?				X
f) Result in inadequate parking capacity?				X
g) Conflict with adopted policies, plans, or programs supporting alternative transportation (e.g., bus turnouts, bicycle racks)?				X

### Discussion

a) – g) – No Impact – The project would not cause an increase in traffic load and capacity of the area. The proposed project would not have an affect on existing air traffic patterns. The project would be located near a public use airport, but is not located in the flight path of arriving and departing planes. The project does not include the installation of any new roads nor will improvements be made to the existing roadways. The proposed project would not result in inadequate emergency access for police or fire services (see discussion under Public Services). The project itself would not require the need for any on site parking. There would not be any conflicts with adopted policies, plans or programs supporting alternative transportation such as bus turnouts or bicycle racks with this project.

### P. Utilities and Service Systems –

	Potentially Significant Impact	Less than Significant Impact with Mitigation Incorporated	Less Than Significant Impact	No Impact
XVI. UTILITIES AND SERVICE SYSTEMS – Would the project:				
a) Exceed wastewater treatment requirements of the applicable Regional Water Quality Control Board?				X
b) Require or result in the construction of new water or wastewater treatment facilities or expansion of existing facilities, the construction of which could cause significant environmental effects?				X
c) Require or result in the construction of new storm water drainage facilities or expansion of existing facilities, the construction of which could cause significant environmental effects?				X
d) Have sufficient water supplies available to				X

serve the project from existing entitlements and resources, or are new or expanded entitlements needed?				
e) Result in a determination by the wastewater treatment provider which serves or may serve the project that it has adequate capacity to serve the project's projected demand in addition to the provider's existing commitments?				X
f) Be served by a landfill with sufficient permitted capacity to accommodate the project's solid waste disposal needs?				X
g) Comply with federal, state, and local statutes and regulations related to solid waste?				X

Discussion:

a) – e) – No Impact – The project would not exceed wastewater treatment requirements of the applicable Regional Water Quality Control Board. The project does include the construction of new storm drain and sewer infrastructure but the project would not cause significant environmental effects. The project would not require water or expansion of facilities to accommodate additional water flow. The project would have no impact on landfill capacities or solid waste regulations.

	Potentially Significant Impact	Less Than Significant with Mitigation Incorporation	Less Than Significant Impact	No Impact
XVII. MANDATORY FINDINGS OF SIGNIFICANCE --				
a) Does the project have the potential to degrade the quality of the environment, substantially reduce the habitat of a fish or wildlife species, cause a fish or wildlife population to drop below self-sustaining levels, threaten to eliminate a plant or animal community, reduce the number or restrict the range of a rare or endangered plant or animal or eliminate important examples of the major periods of California history or prehistory?			X	
b) Does the project have impacts that are individually limited, but cumulatively considerable? ("Cumulatively considerable" means that the incremental effects of a project are considerable when viewed in connection with the effects of past projects, the effects of other current projects, and the effects of probable future projects)?			X	
c) Does the project have environmental effects which will cause substantial adverse effects on			X	

human beings, either directly or indirectly?				
--	--	--	--	--

Discussion

a) – Less than Significant Impact - With implementation of basic regulatory requirements included in this Initial Study the proposed project would not degrade the quality of the environment, result in an adverse impact on fish, wildlife or plant species including special status species or prehistoric or historic cultural resources. The proposed project may temporarily impact the area by construction related air quality, noise and traffic impacts. However, by implementing basic regulatory requirements, and project conditions of approval, these impacts are effectively reduced to a less than significant or no impact level.

b) – Less than Significant Impact - The project is consistent with the City’s General Plan to provide adequate infrastructure for growth and would not create any impacts that would be cumulatively considerable. All project impacts have been reduced by adherence to basic regulatory requirements or conditions of approval incorporated into the project.

c) – Less than Significant Impact - The proposed project would not have any direct or indirect adverse impacts on humans because construction effects would be temporary and have been reduced or eliminated by control measure incorporated into the project.

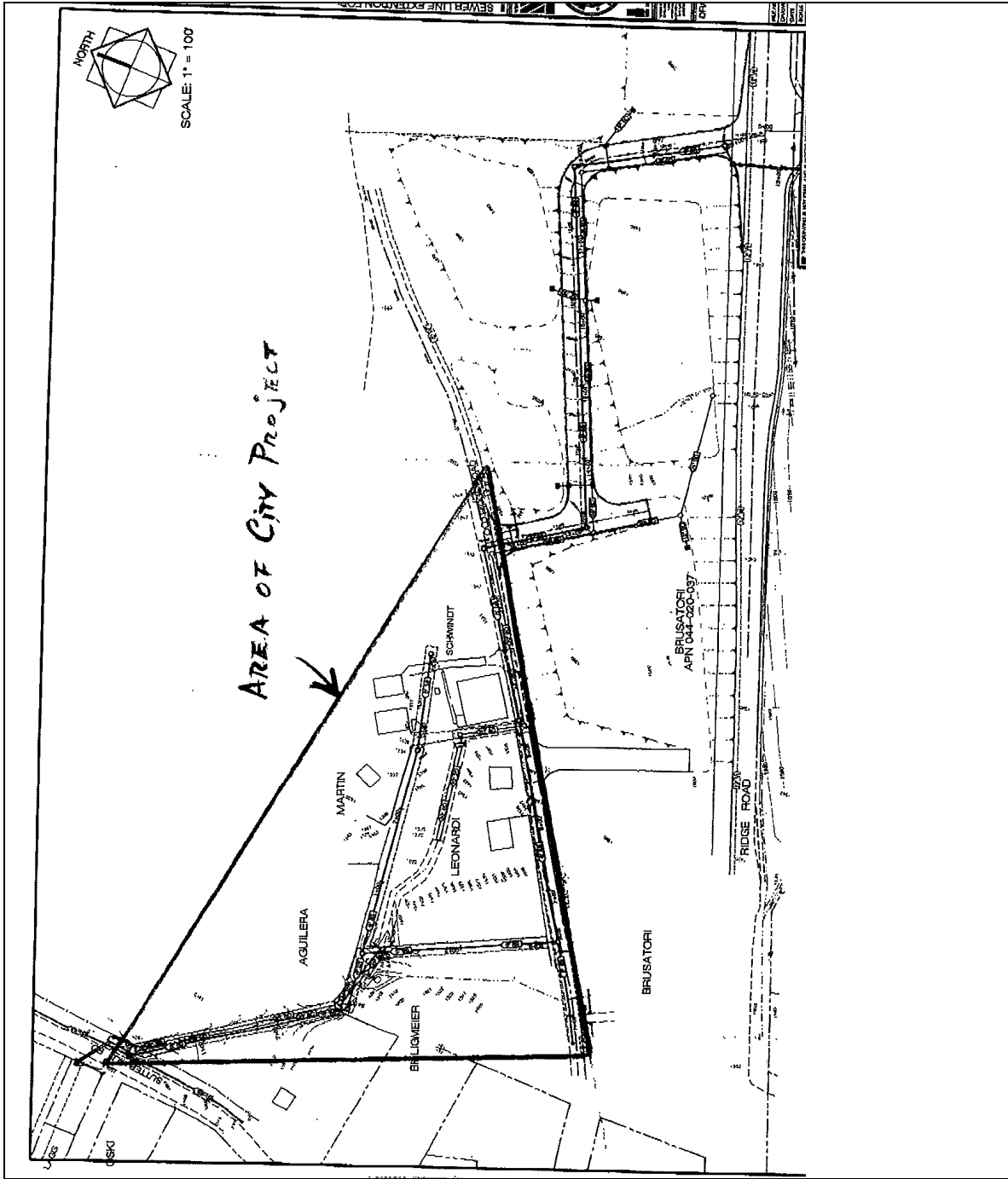


Figure 1

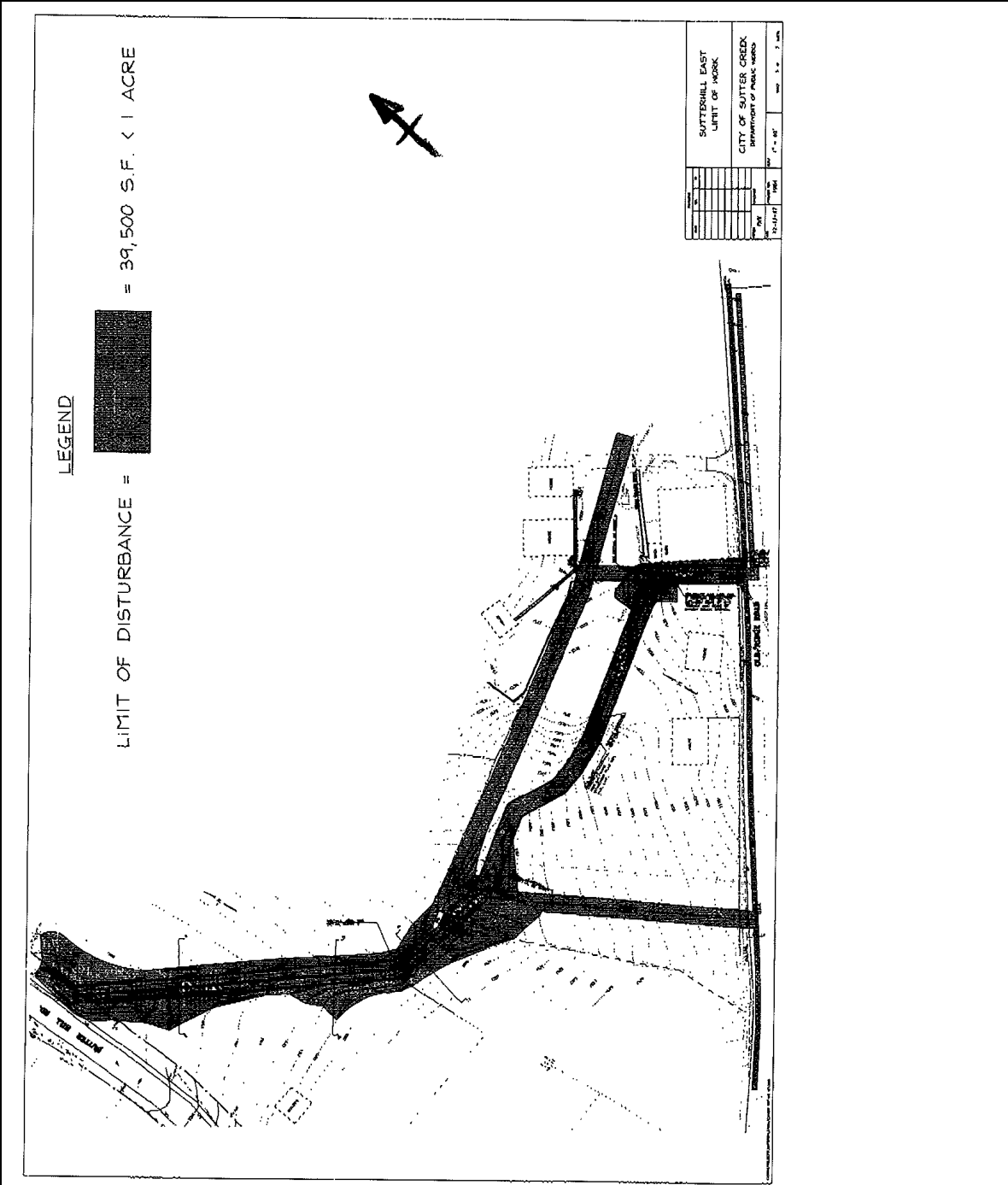


Figure 2